

Acadèmia Altimira

Design Masquespacio · Ana Milena Hernández Palacios
(www.masquespacio.com)

Location Barcelona, Spain

Built Area 123m²

Finish Wood, Fabric

Photographs Cualiti Photo Studio · David Rodríguez,
Carlos Huecas (www.cualiti.es)

Editor Song Ga-hyun

설계 마스케스파시오 · 아나 밀레나 에르난데스 팔라시오

위치 스페인 바르셀로나

면적 123m²

마감 목재, 천

사진 쿠알리티 포토 스튜디오 · 데이비드 로드리게스,
카를로스 우에카스

에디터 송가현



Spanish creative consultancy Masquespacio presents their last project for Acadèmia Altimira. The project that takes us to the Barcelona town Cerdanyola del Vallès consists in the redesign of the brand and interior for the academy of recitation and English classes.

To celebrate the 15 years of existence of Acadèmia Altimira, Laura and Mónica, sisters and owners of the academy, contacted Masquespacio with the idea to redesign their brand and space. The project that was commissioned during the summer of 2014 started with the redesign of Acadèmia Altimira's brand clearly focused on their different targets: kids, teenagers and young adults. The redesign of the brand and interior is inspired by 'Constructing' oneself as a person and through learning, defined here by the specialization in recitation classes and preparation for college and university exams of the academy. Taking in mind the different age groups from the students in first case Masquespacio looked to create an image that could attract little kids, adolescents and young twentysomethings through a young design with actual colors and materials. The design of the interior starts with the construction of three-quarter height plywood walls with the aim to make the most from the little natural light that enters into the academy, besides offering acoustic solutions for the classrooms. The sliding doors made of wood strips meanwhile allow closing the classrooms at any time, without losing the entering light from the corridor. A 'Face to Face' zone is added to the project to offer one to one classes for the students, besides a study area, that maintains the aesthetic lines of the academy defined from the entrance to the final classroom.

영어 교육 전문 학원인 이곳은 '학습을 통해 자신을 만들어간다'라는 개념 아래 절제된 재료와 색상으로 차분하면서도 이색적인 공간을 선보이고 있다. 특히, 아동부터 청소년, 성인까지 다양한 연령대를 수용할 수 있도록 가변형의 가구와 파티션을 적용해 감각적인 디자인을 완성하고 있다.

내부는 목재를 주재료로 사용하여 따뜻한 느낌을 더하고 여기에 초록색, 파란색 계열의 컬러를 더해 신취미를 높여주고 있다. 또한, 교실 문은 미닫이문으로 계획하여 필요에 따라 공간을 여닫으며 효율성을 높여주고 있으며 벽면 곳곳에 감각적인 그레 픽을 더해 자칫 밋밋할 수 있는 공간에 활력을 불어넣고 있다.



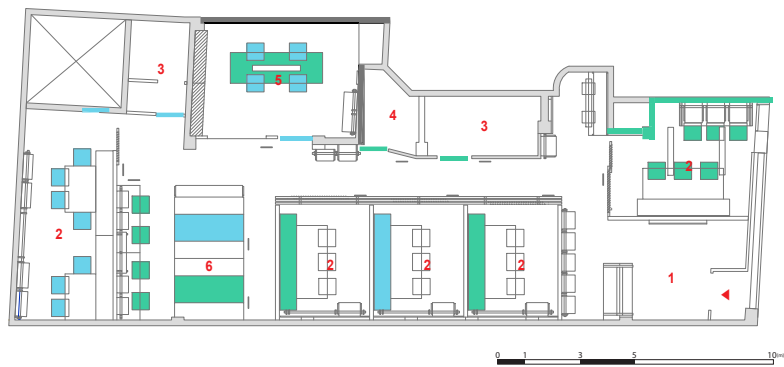


Viewed from the entrance

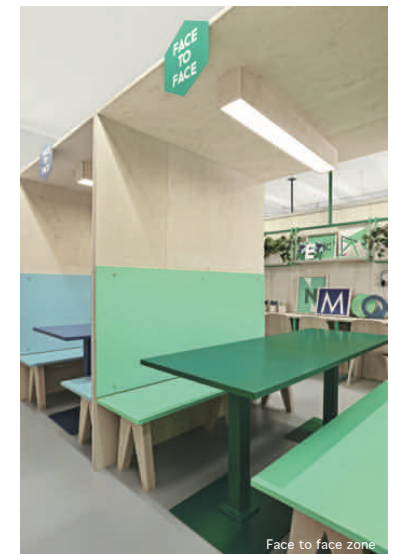


Classroom

- 1. Reception
- 2. Classroom
- 3. Toilet
- 4. Storage
- 5. Director's office
- 6. Face to face zone



Floor plan



Face to face zone